

Snootli Park/Big Cedars Trail

Snootli Creek Regional Park borders on Walker Island Park with trails meandering under a canopy of massive old growth trees. Just 7 miles or 11km east of Bella Coola a sign on Hwy 20 points to Walker Island Park. Turn here headed north. About 328yds/300m down the road, the pavement veers sharply to the left and a dirt road, accessible by two-wheel drive vehicles, meanders off ahead. Visitors follow this road to the end where they will find the beaver pond and Big Cedars Trailhead.

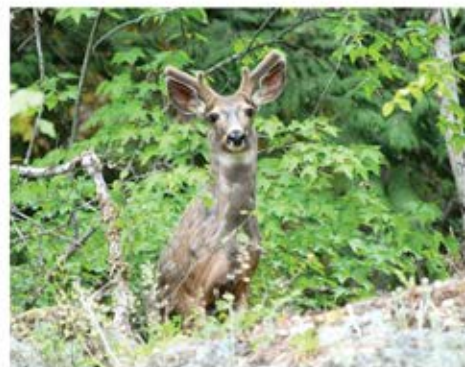
Trailhead Location

The Big Cedars Trail is approximately 1.2 miles/2km long leading by the rodeo grounds, looping back to the parking lot past the beaver pond. It is a series of intertwining trails that are enjoyed by mountain bikers, horse back riders, and hikers alike. The beavers are active and if visitors sit on the shores of the pond

very quietly, they will enjoy watching these busy animals. In the spring water fowl raise their families. Since the trails are in the heart of the rainforest and run under towering trees that shade most of the trails, it can be muddy. However, the muddiest sections do have plank bridges over them.



Photo courtesy BCVT/Geoff Moore



Sacred Site

Some of the trees that live in this park are Sitka spruce, cottonwood and ancient cedars. Part of Snootli Park is a First Nations sacred site where the bark and wood from the trees are gathered for ceremonial objects. Like any other area being explored, please remember to respect and help preserve the wilderness here for others to enjoy.



Photo courtesy BCVT/Michael Wigle

Be Safe

Snootli Trail and nearby Walker Island are very safe. However, as with any trail in the wilderness, stay together in groups, keep dogs on a tight leash, pack out food and wrappers, and keep children close.

Drop into the Visitor Information Centre in Bella Coola for your copy of the Trail Guide and Valley map.

Worth the Trip

This area, like the rest of the Valley, is home to many animals. While walking along the various trails or enjoying the recreational area of the baseball diamond and playground, be sure to keep your eye out for bears, deer, perhaps a beaver or two, as well as ducks.

Snootli Park/Big Cedars Trail is sponsored by:



**Nuxalk
Nation**

**Bella Coola Motel and Campground
in Bella Coola Village**

*10 Units with full Kitchen, Satellite TV,
Wireless Internet*

*Spacious Campground for RVs, Campers,
and Tents right on the river*

*Wheelchair access available
Discovery walks on nearby Estuary*



Phone: 250-799-5323

www.bellacoolamotel.com

bellacoolamotel@gmail.com